



# Animal Nutrition





Technology in Balance



Precision Farming

**Soluble Minerals**

**Feed Premixes**

# Contents

About Agvance	3
Why Choose Agvance	4
Mineral Knowledge	6
Customizer	8
Balanced Diet. Healthy Animal.	11
Customised Premix Solutions	13
Transition Premix	14
Lactation Premix	15
Monensin	16
Mineral Loose-lick	18
Solutrace	21
Metabolizer Plus	23
Southerner	24
Amino	25
CuZinc	26
DCM Plus	27
DCM	28
Dairy	29
FE	30
Rumenox Blends	31
Speciality Products	32
Goat Mineral Solutions	34
Metabolizer Plus for Goats	35
Ascocool	36
Liverade	38
Calf AminoBoost	40
Canine AminoBoost	41



# About Agvance

Agvance understands that successful farmers want to balance their soils and improve their animal health.

Today we are one of the largest and broadest based mineral importers in New Zealand. We provide a complete range of solutions to on-farm needs, across fertiliser and animal feed. Recommended by vets around the country. Agvance supports farmers to achieve improved, sustainable results.

## **Complete expertise across pasture, soil & animal nutrition**

Agvance is recognised for its comprehensive expertise in minerals.

In 1987 Agvance established a working relationship with Ballance Agri-nutrients, supplying the high-quality trace elements for fertilisers used throughout New Zealand. This close working relationship has now been in place for nearly 20 years.

The NZ Farming Industry needed mineral blends suitable for dosing through water systems and drenches. Agvance met the challenge and carefully developed cost effective, mineral blends suited to the purpose.

Agvance has continued to develop specialised blends containing chelated minerals, vitamins, and even amino acids. These targeted solutions effectively overcome specific deficiencies that can lead to animal health issues.



## **Smart Science & Innovation**

Agvance is focused on delivering the best farming support available. We act on scientific fact, years of on-farm trials and results. This drive for farming success includes developing first-to-market innovative software.

Since the early 1980s Agvance has been a step-ahead. Leaping forward to today, Agvance is still introducing the latest technology available. We utilise software that allows for efficient quoting, manufacture, and tracking of product blends and materials.

Agvance Customizer is a fully-featured feed and mineral formulation program. It has become an exclusive and essential tool for vets and animal nutritionists. Customizer enables Agvance to deliver highly customised solutions for Kiwi Farmers.

## **Sustainable NZ farming solutions that work**

We are motivated by a passion to serve our clients, keep your animals healthy and productive, and to keep your costs down through delivering innovative products and more efficient systems.

Agvance is proud to be leaders in animal nutrition, pasture & soil. Supplying mineral solutions of the highest quality.



# Why Choose Agvance

---

Agvance formulations are specially blended; using only the highest quality ingredients, processes and technology to achieve optimum results. They work to prevent the mineral deficiencies that can lead to issues including lameness, facial eczema, infertility, metabolic diseases, somatic cell problems and infectious diseases, as well as many other diverse problems.

---

## 1. BEST QUALITY IMPORTS

Only the best quality trace minerals and vitamins are selected for import. Manufacturers are required to supply specification sheets that meet or exceed Agvance's stringent requirements for each consignment supplied.

## 2. QUALITY TESTED

All minerals used are independently quality tested by laboratories in Canada, the United States and Germany.

## 3. GLOBAL STANDARDS

All mineral chelates used in our blends are underpinned by the best science and technology that the world's biggest chemical manufacturers can bring to bear.

## 4. GUARANTEED TRACEABILITY

Each ingredient, along with its original specification sheet and independent analysis data, is tracked by batch number within our system, these individual mineral batch numbers are then tied directly into the recipe for each blend. To better trace and

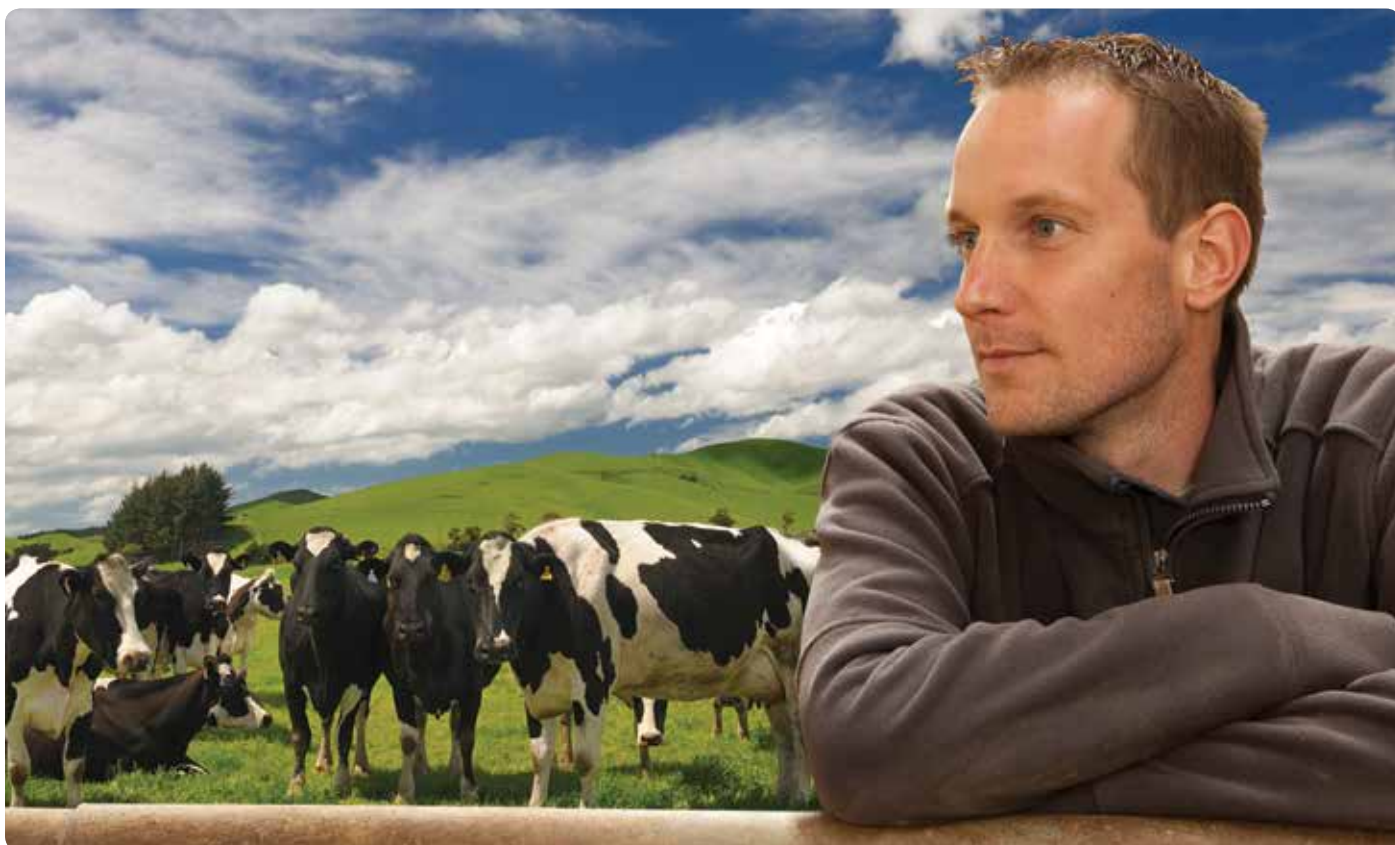
guarantee the quality and consistency of each formulation, a sample of the blended product is retained in our factories for a period of 12 months following date of manufacture.

## 5. LATEST PRODUCTION TECHNOLOGY

Agvance have invested in state of the art blending and bagging machinery that delivers maximum flexibility. The differing formulation needs of each farm can be delivered at the highest quality level. This superior, bespoke service for farms and veterinarians is achieved without a cost premium.

## 6. RECOMMENDED BY VETERINARIANS

For more than 8 years, vets have been recommending Agvance formulations to their clients on thousands of NZ farms. During this time, these vets have actively used both Customizer (customized blends), standard Solutrace, and also their own vet branded blends - all blended and supplied by Agvance. The proven results can be found on thousands of Kiwi farms.



## THE RESULTS SPEAK FOR THEMSELVES

Liver biopsies and blood samples regularly carried out by vets on hundreds of farms prove Agvance products work consistently to achieve good results.

## GUARANTEED FOR QUALITY AND EFFICACY

Our mineral chelates are supplied by a leading German manufacturer of minerals and vitamins. Based on animal trials and advanced laboratory testing these minerals are manufactured to the highest possible standard. The unique micro prill granulation system insures a product that is dust free, free flowing and instantly soluble.

## TESTED TO GLOBAL STANDARDS

Agvance carries out a range of tests specific to each mineral. Analysis can include elemental mineral level, solubility, heavy metal impurity levels and Dioxin/PCB levels. Every single formulation is produced using Agvance machinery at one of the company's own NZ factories, effectively guaranteeing that these quality standards are maintained from procurement of ingredients, through to accuracy of blending, supply to farm and, finally, assessment of herd health, and analysis of herd data, all carried out by your local vet.



### Constant investment in production technology

- Batching machinery at one of Agvance's New Zealand factory sites.

# Mineral Knowledge

---

Different situations will require distinct solutions - the right minerals, in the correct form and right combination. For the health of your animals it's essential to get the right advice. Agvance know minerals and can provide the guidance you need to get the best farming results.

---

## SELENIUM

### On farm importance

- Works with vitamin E as an antioxidant or protector of body cells
- Important in maintaining elasticity of muscles
- Gives protection against disease
- Important in conception

### Deficiency symptoms

- Ill thrift
  - Low conception rate
  - Low immunity
- 

## ZINC

### On farm importance

- Helps carry carbon dioxide to the lungs
- Helps fight infection
- Keeps skin and hair healthy
- Important in both male and female fertility
- Helps regenerate cell damage
- Hardens hooves

### Deficiency symptoms

- Ill thrift
  - Poor conception
  - Rough coat
  - Hair discoloration
- 

## COPPER

### On farm importance

- Helps to form red blood cells
- Important in the construction of hair and muscle
- Key to the utilization and proper metabolism of proteins

### Deficiency symptoms

- Ill thrift
  - Poor conception
  - Rough coat
  - Hair discoloration
- 

## IODINE

### On farm importance

- Most of the body's iodine is contained in the thyroid gland
- Controls metabolism, energy, mental response, maintenance of body condition

### Deficiency symptoms

- Lack of energy
  - Loss of sexual libido
- 

## MAGNESIUM

### On farm importance

- Controls energy production by controlling sugar levels
- Important for bone formation
- Important in protein metabolism
- Key element for conception
- Helps to regulate muscles
- Regulates digestion and digestive bacteria

### Deficiency symptoms

- Poor body tone
  - Lower levels of conception
  - Lethargy
- 

## COBALT

### On farm importance

- Key to promoting bacteria in the rumen that is vital to the formation of vitamin B12. This process is vital in the breakdown of propionic acid a major ruminant energy source.
- Helps in the transport of folic acid to the liver through the formation of methionine

### Deficiency symptoms

- Ill thrift
  - Lack of energy
  - Poor conception rates
-



## UNDERSTAND WHAT WORKS

Using the right mineral combinations for your specific farm and herd requirement is important. It is equally important that any mineral employed is done so in the correct form. Ensure you are utilising high quality chelated minerals as part of an effective mineral solution.

## WHAT IS AN AMINO ACID CHELATE?

These are specific minerals (metals) that have been manufactured in such a way as to attach the mineral to a fully hydrolyzed amino acid protein. Formed into an amino acid chelate, the mineral is protected so rumen bacteria and enzymes cannot degrade it, and other unbound minerals in the rumen won't attach to it and cause it to be excreted prior to absorption. Because the body identifies the amino acid attached to the mineral rather than the mineral itself, the mineral along with the amino acid is able to be absorbed directly to the cell. In this way the attached mineral can be utilised to its full potential.

Access to superior production technology is required to ensure nutritional integrity is maintained in the chelation process. Agvance source high quality German manufactured copper, zinc, manganese and iron glycinate. These have been rigorously tested in the laboratory to ensure the maximum level of mineral-amino acid chelation is being achieved.

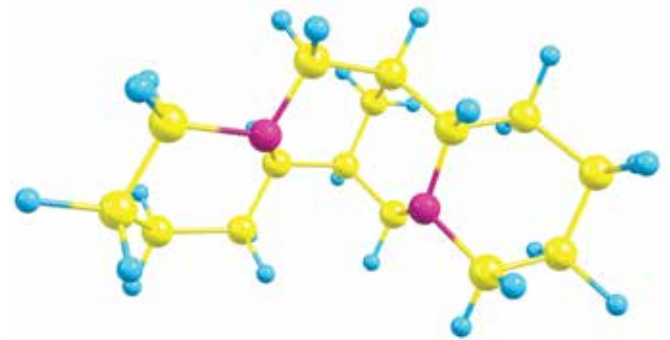
Unlike amino acid chelates, minerals in inorganic form are poorly absorbed and poorly translocated through the body. Inorganic mineral forms are stored until such time as the body can absorb a portion of them, the rest being excreted.

## ACCESS SCIENTIFIC RIGOUR

Agvance mineral blends are primarily based on key chelated mineral components; transported directly to each cell of the body, and being of the highest absorption and availability to your animal.

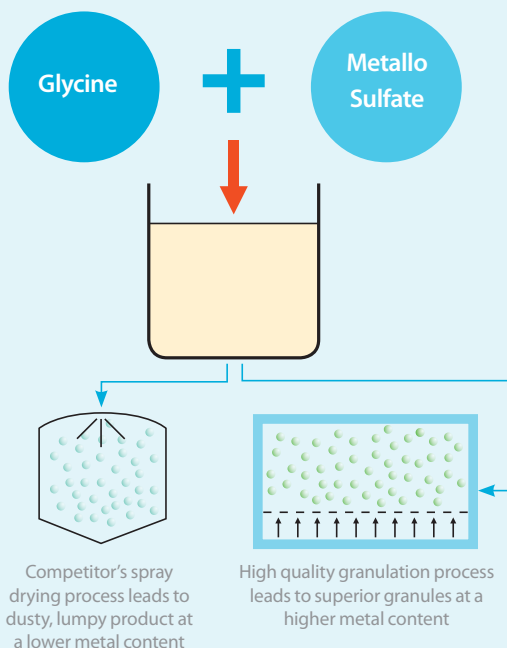
Both inorganic and chelated mineral forms do have a role to play, depending on the specific requirements of the farm and animal. Applying the forms effectively provides an ability to target the different mineral types to utilise organ storage. Some rumen availability can also help feed microbial populations, and also trigger different metabolic processes - cobalt to B12 synthesis for instance.

Agvance understands the science of minerals, and we understand the importance of detail. Every Agvance blend is fully itemised on the product label. Labels clearly show the form of each mineral used, as well as the milligrams in each form being dosed to each animal. You should expect nothing less.



Chelated minerals can be transported directly to each cell of the body. They are the most effectively absorbed mineral form.

### SUPERIOR PRODUCTION TECHNOLOGY ENSURES HIGH QUALITY CHELATES



29	30
<b>Cu</b>	<b>Zn</b>
[Ar]4s <sup>1</sup> 3d <sup>10</sup>	[Ar]4s <sup>2</sup> 3d <sup>10</sup>
copper	zinc
63.55	65.39

# Customizer

## TAKE THE GUESSWORK OUT OF ANIMAL NUTRITION

Vets and qualified animal nutritionists use Agvance Customizer on farms across New Zealand. With Customizer they can provide the right mineral solutions, tailored to the specific nutrition needs of your farm.

Your specific customised blend is then delivered to your door.

## CUSTOM SOLUTIONS

Using nutritional tests, such as blood tests and liver biopsies, your animal supplements can now be matched to the exact requirements of your herd. At the same time, the Customizer program maintains a comprehensive record of these formulations.

Agvance Customizer provides you with outstanding options. The Customizer program can be applied to deliver either a tailored feed premix solution or, if required, a totally soluble mineral formulation.

## THE PROCESS IS SIMPLE SCIENCE



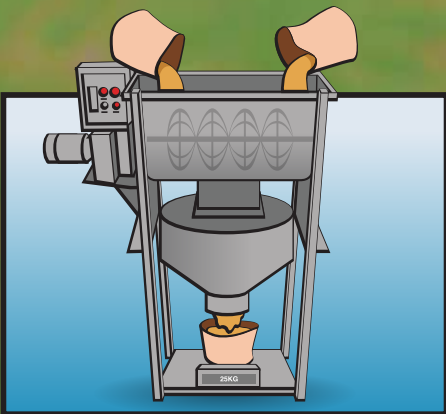
Your vet takes blood and liver samples.



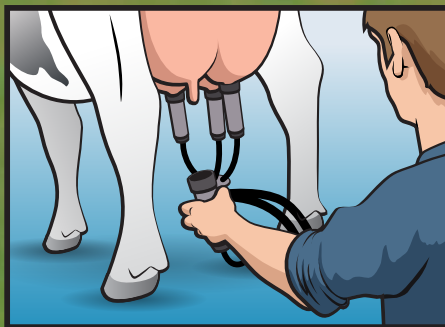
Your vet identifies herd mineral requirements, by examining analysis reports and utilizing their knowledge of the herd.



Your vet builds a mineral blend on the Customizer program based on herd requirement and performance.



A custom blend of minerals is produced, to address your herd's requirements.



Production flows, from a healthier animal, receiving optimum mineral supplementation.

## ASK YOUR VET FOR CUSTOMIZER

Customizer is an innovative computer program from Agvance that completely revolutionises the way you supplement your herd. Take advantage of this effective technology. Request the best farming advice available.

Whether you run goats, deer, horses or cattle - take advantage of precision farming – get the best result with Agvance Customizer.



Precision Farming

Soluble Minerals

Feed Premixes





***CALCIMATE***

OZMAG





Balanced Diet. Healthy Animal.



Premix Feed Solutions

Feed Additives

Monensin

Mineral Loose-lick

## Balance your animal's diet effectively. Access sustainable results.

---

Agvance premix solutions are mineral combinations designed to balance feed.

The minerals are not necessarily soluble, hence a much wider range of beneficial elements can be used.

Our premix blends are easily administered on the farm. They can be added to a mixer or feed-out wagon and fed to cows on a feed pad. They can also be added to grain based meals at feed mills, or dosed through mineral dosing bins mounted onto the grain feed auger beside a feed silo.

When the feed ratios are calculated correctly Agvance mineral premix blends can be built to totally balance all likely macro mineral and vitamin deficiencies within the diet.

# Customised Premix Solutions

Each farm is different. That includes your herd's condition and feeding plan. To achieve a balanced diet the most effective solution is a custom premix.

A custom premix can specifically target mineral needs around certain crops, or types of silage. The specific ratio of feed types used, e.g. maize silage, pasture, PKE, etc. informs the formulation. As feed ratios adjust, and the seasonal needs of the herd change, your custom premix is able to be updated quickly and simply within the Customizer program.

The old saying 'one size fits all' certainly does not apply to farm feed supplements. Major gains in animal performance, health, and cost effectiveness, can be gained by identifying your specific requirements and addressing them.

## ACCESS THE RIGHT NUTRITION AT THE RIGHT TIME

### - MAIZE SILAGE BALANCERS

Premix formulation will alter depending on the ratio of maize to pasture. Other additives such as PKE, crop feeds, or even grain based concentrates may be added to an animal's diet. Each time another feed is added to the diet, the composition of the premix needs to change. This more scientific approach leads to an ideal balance of nutrients. Often substantial cost savings can be made while more effectively addressing the requirement.

### - CROP BALANCERS

Specific crops, such as kale, fodder beet, and cereals, raise unique mineral supplementation requirements. In many cases these premix balancers also need to be blended to cater to a number of challenging feed environments, such as in paddock feeding situations where cattle are strip grazing crops during winter, or added to other supplemental feeds being fed alongside the crop. Again each feeding situation is different and will require a different approach and formulation to suit.

### - TRANSITION PREMIX

Customizer is the ideal tool when it comes to building anionic salt (negative DCAD) transition blends. These blends will ensure the causes of metabolic disease are treated before they occur and that your cows calve and then launch into lactation without these energy sapping problems. Customizer now incorporates a feed library that calculates the mineral requirement as well as DCAD ensuring optimum anionic corrective formulations can be developed in all feeding situations.

### - LACTATION SUPPORT

The Customizer system gives your vet the tools to target the ideal positive DCAD for lactating dairy cows, while also calculating the magnesium, calcium, sodium and phosphorous required during the lactation period. Trace minerals can be added to the requirement, along with such options as monensin, rumen buffers and toxin binders.



Precision Farming

Feed Premixes

# Transition Feed Premix

Providing a balanced diet for your cows over the transition period is essential to spring success on the farm. An effective transition feeding plan helps to avoid metabolic disease, increase spring milk production and improve reproductive performance.

## TRANSITION COWS NEED THE RIGHT DIET

The term transition covers the period right at the end of gestation, this is the period where a cow transitions from being a dry cow on low feed levels, giving birth, lactation, and higher feeding levels. Although the cow is not producing it could be argued that this is the most critical period in the entire season.

Correctly transitioning a dairy cow will ensure both a better functioning rumen and higher levels of available energy in early lactation. Levels of calcium are more effectively maintained and mobilised within the body.

These factors combine to reduce the incidence of almost every animal disease experienced in early lactation, right through to better levels of conception later in the spring.

A custom transition premix is the most effective solution at this time. Agvance Customizer takes into account animal condition and their feeding plan to identify the correct supporting feed premix for your farm..



Precision Farming

Transition Premix

## STEPS TO EFFECTIVE TRANSITIONING

1. Effective transitioning is accomplished by increased feed, along with gradually increased energy in the diet.

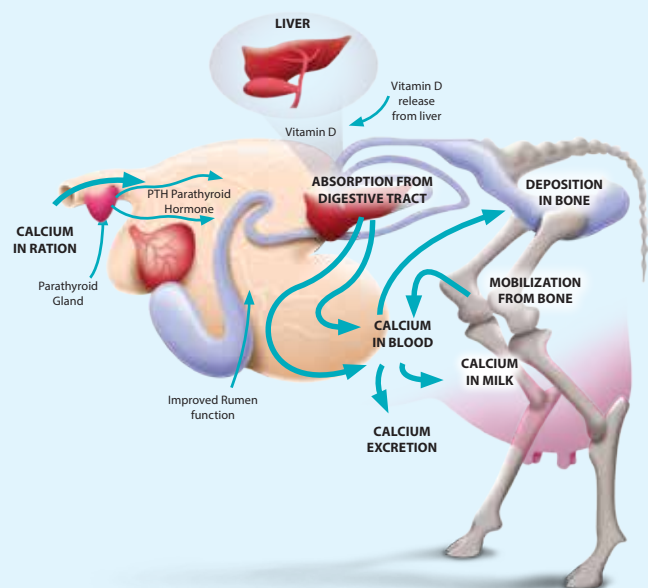
**Result:** Rumen function is gradually increased during this period.

2. Calcium, magnesium, phosphorous, chloride and sulphur, along with key trace elements are added to the diet in the correct ratios.

**Result:** Optimum levels of these minerals ensure good levels are maintained at this critical time where requirements are increasing.

3. These mineral salts are added in only negative DCAD form.

**Result:** The parathyroid gland is stimulated to produce hormones that allow for better absorption and mobilisation of calcium, at the same time releasing more vitamin D from the liver. Increased rumen function can also lead to a better flow of energy from the rumen. A contrast to the energy slump experienced by most dairy cows in early lactation.



Well transitioned cows are critical to Springer milking success.



# Lactation Feed Premix

## LACTATING DAIRY COWS

Early lactation puts a cow's body under intense pressure. Significant hormonal and digestive system changes are involved in producing milk. These changes increase her need for key nutrients such as calcium, phosphorous, and magnesium, in order to help meet the demands of producing milk for the newborn and rapidly growing calf.

## THE RIGHT MINERAL SUPPORT

During this period it is important that a cow receives a high amount of feed to meet her increased appetite. Ideally this provides the correct levels and quality of protein, sugar, fibre, essential vitamins and minerals. In reality, due to lack of sunlight in the spring, as well as the use of plant cultivars that are bred to grow quickly and produce bulk feed rather than nutrition, most feed provides poor quality protein, lack of fibre, and low mineral levels.

It is essential that a lactating cow receives the correct balance of minerals, and possibly additional high quality fibre, in order to balance her diet during this critical period.

## CUSTOM FEED PREMIX

Agvance produces a wide range of mineral salts suitable for feeding cows post calving. These can be custom blended to the exact requirement of each herd, taking into account the ratio of feed in each ration and then calculating the nutrient levels required to balance the ration.

Agvance can also blend different mineral forms in order to cater to a farms different feeding systems. For instance, mixer wagons used in a feed pad situation may require minerals in a powder form that will combine with the silages used. While minerals fed in meal using an automated shed feeding system should be in a granulated form that will guarantee free flow and zero dust in the shed.



**CUSTOMIZER**

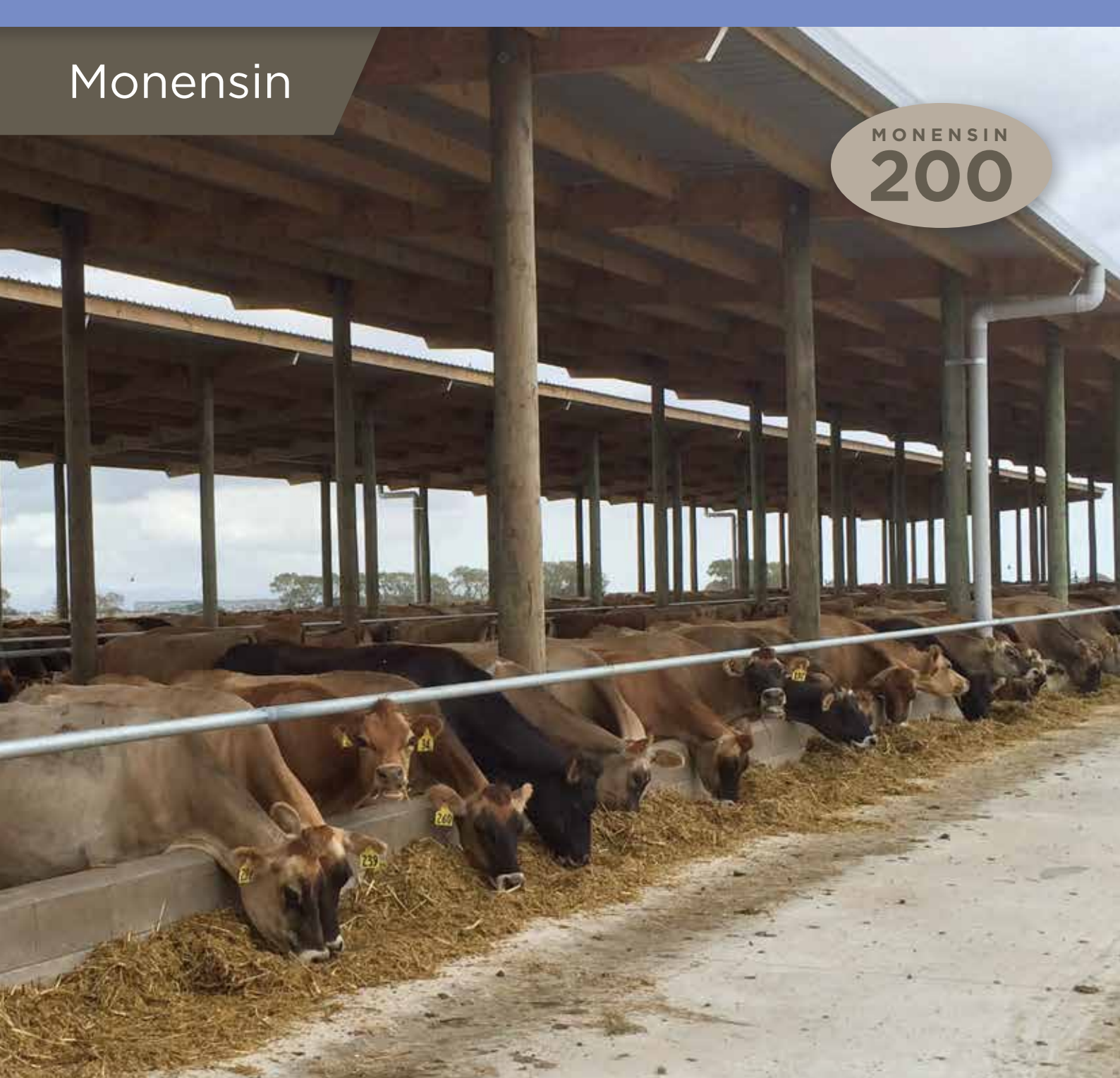
Precision Farming

Lactation Premix



# Monensin

MONENSIN  
**200**



Lactation and normal seasonal stress leave dairy cattle with depleted energy. This impacts milk production levels and increases the risk of ketosis. Monensin 200 is a feed additive providing a measurable boost to energy levels that can increase milk volume and milk protein.

**0800 BALANCE**

[agvance.co.nz](http://agvance.co.nz)



Advantages

## THE ENERGY BOOST FOR DAIRY CATTLE

### WHAT IS MONENSIN 200

This is an additive that will blend well into feeds individually, or as part of a customised blend. Monensin modifies the rumen in such a way as to promote a higher level of gram-positive bacterial activity. This in turn increases propionic acid production in the rumen, which can increase milk volume and milk protein.

#### VOLATILE FATTY ACID UTILISATION

Fatty Acid	Relative Efficiency
Acetic Acid	62
Butyric Acid	78
Propionic Acid	109

The above quite clearly demonstrates the potential that can be achieved by adjusting rumen bacterial populations in order to achieve maximum propionic acid production.

### BENEFITS

- **Increased milk production** – the production of propionic acid can increase milk volume and milk protein
- **Reduced Ketosis Risk**
- **Bloat control** – using 300mgs of Agvance Monensin 200 per cow per day has been shown to reduce the occurrence and symptoms of bloat

### TECHNICAL INFORMATION

#### Monensin 200 by Agvance

- Insoluble Monensin salt for blending into cattle feed
- 25kg net bag weight
- Mineral levels can be custom blended to herd requirements

#### Daily Dose Rate

- 1.5 grams supplies the recommended cow dose of 300 milligrams of Monensin.

### FEATURES

- **Cost effective** – Agvance Monensin 200 is one of the most cost effective additives available to the farmer, with a single 300mg dose costing as little as 1.65 cents.
- **High Quality** – produced to the highest standards in a modern plant by one of the largest manufacturers of agricultural pharmaceuticals in the world.
- **Flowability** – the product is produced as a uniform sized micro prill, as such Agvance Monensin 200 produces less dust and has superior free flowing characteristics. This product will blend well into feeds. Adequate mixing will ensure minimal risk of hotspots occurring in feed blends.



Registered pursuant to the ACVM Act 1997, No. A11097  
 See [www.foodsafety.govt.nz/acvm/](http://www.foodsafety.govt.nz/acvm/) for registration conditions.  
 Approved pursuant to the HSNO Act 1996 No. HSR02317  
 See [www.epa.govt.nz](http://www.epa.govt.nz) for approval conditions.

This product must not be used for growth promotion in ruminants intended for human consumption.

# Mineral Loose-lick



Contain effective mineral levels that aid in metabolism, prevention of metabolic disease, energy utilisation, body condition and the maintenance of blood and liver mineral levels.

## WHY USE A LOOSE LICK

Loose licks are a very cost efficient way of offering a general mineral blend to animals fed on pasture or forage crops. They are an easy and simple option of providing a macro mineral and trace element supplement to the herd.

## STANDARD LOOSE LICK BLEND

- **Salt** - to balance mineral levels in crops and pasture aiding in metabolism and the prevention of metabolic disease.
- **Effective Magnesium** - high quality Australian magnesium oxide used in maintaining blood magnesium levels and helping to prevent metabolic disease.
- **Copper Glycinate Chelate** - a high quality chelate providing a high quality organic copper supplement. This helps to build / maintain copper levels in the liver and blood, and supports the health of the animal.
- **Zinc** - maintains / boosts the immunity of the animal through times of stress (wet/cold conditions and late stages of pregnancy).
- **Iodine** - in highly available EDDI form, helps to maintain iodine levels while on goitrogenic crops. Aids metabolism and is important in preparing the cow for the calving period.
- **Selenium** - supports maintenance of blood selenium levels going into the calving period.
- **Chromium** - aids energy metabolism by helping a cow efficiently use the energy she is eating to increase body condition.

## STANDARD LOOSE LICK BLEND DOSAGE RATES

Element	Dose Rate
Salt*	30g
mg Oxide* (OzMag)	18g
Copper Glycinate	85mg
Zinc Sulphate	266mg
Iodine (EDDI)	21mg
Selenium	3.3mg
Chromium	2.5mg
Aniseed Flavouring	
<b>Dose Rate</b> <b>25kg net bag weight</b>	<b>50g/cow/day</b>

\*Not elemental.

## FODDER BEET LOOSE LICK BLEND

- Feeding cattle on fodder beet raises a number of mineral issues requiring a more specialised blend. This blend supplies levels of phosphate and calcium specifically required by cattle grazing this crop, in addition to a balanced organically based trace element blend.

## TECHNICAL INFORMATION

### Daily Dose

On-farm trials have shown cows will settle on about a 70gm/cow/day dose rate over a period of 3-4 days. This intake rate can vary, based on the weather at the time, cold and wet conditions can see a 20-40% increase and warmer dry weather can see a 20-40% decrease.

### Dosing Instructions

To be fed in one 100lt container per 100 cows (use 200 ltr drums, cut in half). This container should have holes drilled in the bottom so water does not accumulate. The product should be topped up in these containers every 1-2 days.

## FODDER BEET LOOSE LICK BLEND DOSAGE RATES

### Element

Salt*	25g
MCP	20g
MagPhos Gran	25g
Copper Glycinate	100mg
Zinc Sulphate	400mg
Iodine (EDDI)	10mg
Selenium	3.8mg
Chromium Glycine	2.0mg
CreamaSweet	0.1mg
<b>Dose Rate</b>	<b>70g/cow/day</b>
<b>25kg net bag weight</b>	

\*Not elemental

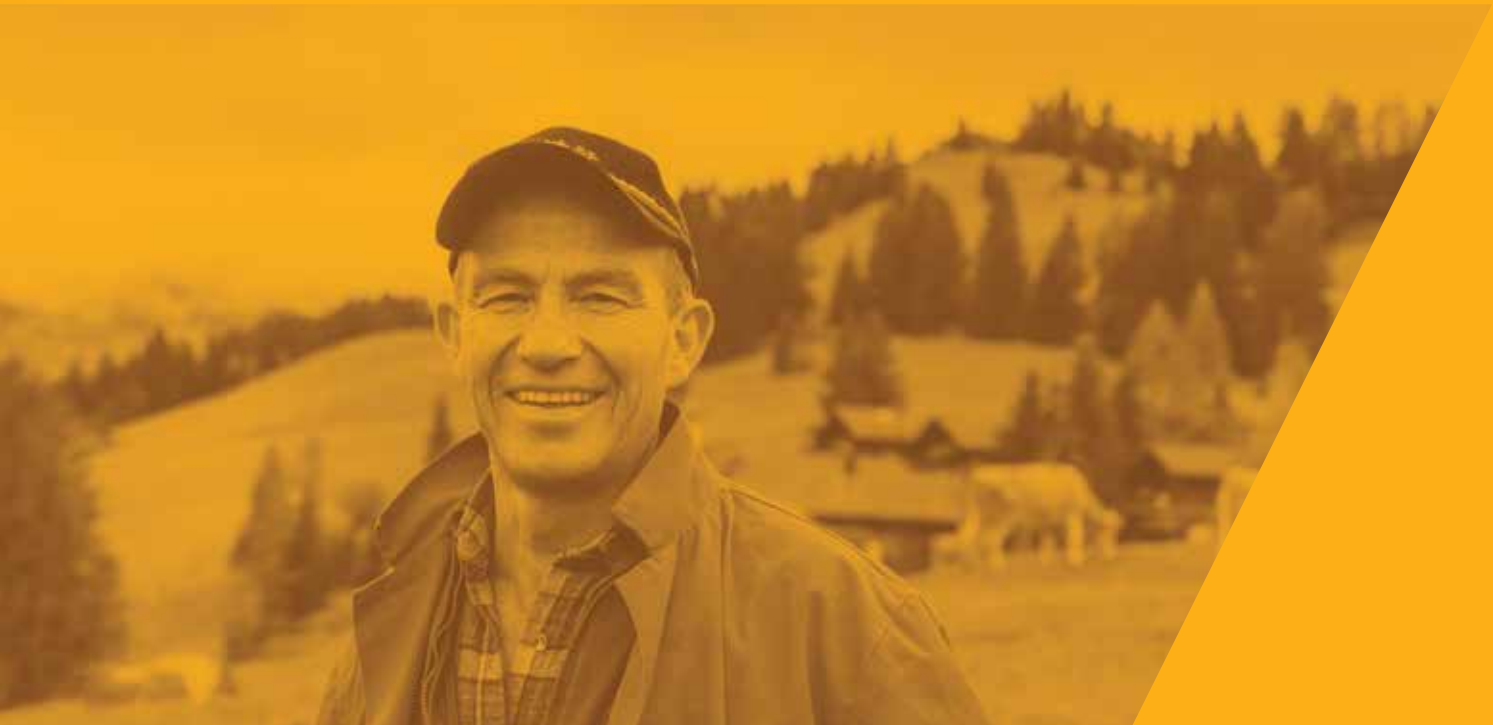
\*Mineral levels can be custom blended to herd requirements







Technology in Balance



Metabolizer Plus

Southerner

Amino

Cu Zinc

DCM Plus

DCM

Dairy

FE

Rumenox Blends



Technology in Balance

## Each Solutrace blend is totally and readily soluble.

---

This range is designed to cover nearly every situation likely to be faced on a dairy farm, and to address known area mineral deficiencies. High tech, German manufactured chelates, provide for higher levels of mineral absorption from each blend.

They are easy to use and are compatible with all mineral dispensing units. Chelated minerals also mean less wear and tear on your dosing equipment.

Talk to Agvance about the right Solutrace solution for your farm.



# Metabolizer Plus



Advantages

- SUPERIOR ANIMAL HEALTH
- PREMIUM CHELATES
- HIGH IN ORGANIC ZINC
- HIGH IN ORGANIC COPPER
- OPTIMAL IMMUNITY

When you need a superior boost to animal nutrition and wellbeing. Metabolizer Plus provides the highest level of protection against potential animal health challenges. Supporting optimal immunity and avoiding mineral deficiency all year round.

## FEATURES

A comprehensive blend of highly concentrated minerals, for maximum on-farm benefit. The high quality Copper and Zinc mineral chelates deliver maximum absorption of nutrients.

- **Totally soluble**
- **Highest levels of minerals in organic form**
- **Superior mineral availability** – Zinc Glycinate is complexed to more than 95% and Copper Glycinate to more than 93%.
- **Easy to use**

## BENEFITS

Avoid mineral deficiency.

Support optimal immunity throughout the year. Minimise exposure to animal health issues on the farm.

High quality Zinc and Copper Chelates support healthy connective tissue, skin, reproductive performance and overall bone health. Supports long term hoof health.

## TECHNICAL INFORMATION

Each bag of product is pre-blended, dried and ground to a consistent particle size.

### Mixing Instructions

These minerals are totally soluble and can be either drenched or dosed through the water system or directly into cattle feed. If this product is to be drenched with magnesium oxide (Causmag, Calmag) it is advisable to let the magnesium oxide solution settle overnight before adding the Solutrace mineral blend. Magnesium sulphate, magnesium chloride, salt, or calcium chloride can be mixed in immediately.

### Daily Dose Rate

The usual dose is 5gms/dairy cow/day. Yearlings 3gms/day maximum.

### Dosage Methods



Drench gun



Trough



Mixer wagon



Dosing pump

## DAIRY COW TRACE ELEMENT BLEND

(Product code M16)

### Elemental levels

Typical Analysis Mg's per dose @ 5 gms/cow/day

### Element

Copper Glycinate	150mg
Zinc (sulphate)	680mg
Zinc Glycinate	360mg
Manganese (sulphate)	161mg
Cobalt (sulphate)	25mg
Iodine (EDDI)	20mg
Selenium (Selenate)	8mg
Boron (Dia Octahydrate)	75mg
Chromium Glycinate	3.5mg
<b>Net Bag Weight</b>	<b>25kg</b>

\* Metabolizer Plus Low Copper uses organic (chelated) copper at a rate of 50mgs per dose.

Mineral levels can be custom blended to herd requirements

# Southerner



Advantages

SUPERIOR ANIMAL HEALTH	GENUINE CHELATES	HIGH IN COPPER	BETTER SELENIUM AVAILABILITY	EASY TO USE
------------------------	------------------	----------------	------------------------------	-------------

## Specifically formulated for the Southland region.

High rainfall and heavy reliance on crop grazing leads to higher levels of soil ingestion. This causes a number of essential minerals to become bound and excreted. Southerner solves the problem and delivers superior nutritional support.

### FEATURES

A complete balance of 8 trace minerals with the key minerals in a non-binding amino acid chelate form. Amino acid chelates deliver maximum absorption of nutrients, while supporting minerals in non-organic form efficiently feed rumen bacteria.

- **Totally soluble**
- **High in Copper** - in glycinate form to deliver higher blood copper levels
- **Better Selenium Availability** - the right amount and in glycinate form, for control of selenium deficiency
- **Easy to use**

### BENEFITS

A superior mineral blend designed for Southland dairy farming and feeding conditions. The right minerals, in the right form deliver boosted immunity and nutritional support.

Avoid mineral deficiency throughout the year.

### TECHNICAL INFORMATION

Each bag of product is pre-blended, dried and ground to a consistent particle size.

#### Mixing Instructions

These minerals are totally soluble and can be either drenched or dosed through the water system or directly into cattle feed. If this product is to be drenched with magnesium oxide (Causmag, Calmag) it is advisable to let the magnesium oxide solution settle overnight before adding the Solutrace mineral blend. Magnesium sulphate, magnesium chloride, salt, or calcium chloride can be mixed in immediately.

#### Daily Dose Rate

The dose is 5gms/dairy cow/day.  
Yearlings and mixed age calves 2 - 3 gms/day.

#### Dosage Methods

			
Drench gun	Trough	Mixer wagon	Dosing pump

### DAIRY COW TRACE ELEMENT BLEND

(Product code M36)

#### Elemental levels

Typical Analysis Mg's per dose @ 5 gms/cow/day

#### Element

Copper Glycinate	200mg
Zinc (sulphate)	525mg
Zinc Glycinate	250mg
Manganese (sulphate)	125mg
Cobalt (sulphate)	25mg
Iodine (EDDI)	20mg
Selenium Glycinate	4mg
Selenium (Selenate)	4mg
Boron (Dia Octahydrate)	70mg
Chromium Glycinate	3.5mg
<b>Net Bag Weight</b>	<b>25kg</b>

Mineral levels can be custom blended to herd requirements

# Amino



## Advantages

BETTER  
ANIMAL  
HEALTH

GENUINE  
CHELATES

MORE  
COST  
EFFECTIVE

EASY  
TO  
USE

If high levels of malignant are present in your pasture consider Amino. By supplying key minerals in chelated form, a high tolerance to different feeds is achieved, making Amino an excellent all-round solution in balancing your animals diet.

## FEATURES

- **Totally soluble**
- **Key minerals in both chelated form and sulphate form**
  - means a wider range and better delivery of nutrients to the animal
- **High quality mineral chelates work well in combination**
  - especially relevant to Copper and Zinc
- **Easy to use**

## BENEFITS

Better animal health with an effective mineral solution.

Access a wider range of minerals at much higher levels of concentration due to the dual mineral forms in Amino.

Amino will effectively combat high malignant levels in an animals diet if present on your farm.

## TECHNICAL INFORMATION

Each bag of product is pre-blended, dried and ground to a consistent particle size.

### Mixing Instructions

These minerals are totally soluble and can be either drenched or dosed through the water system or directly into cattle feed. If this product is to be drenched with magnesium oxide (Causmag, Calmag) it is advisable to let the magnesium oxide solution settle overnight before adding the Solutrace mineral blend. Magnesium sulphate, magnesium chloride, salt, or calcium chloride can be mixed in immediately.

### Daily Dose Rate

The dose is 5gms/dairy cow/day. It can be increased to 5gms twice a day if necessary. Dose rate is not recommended to exceed 10gms per day. Yearlings & dry cows 3gms/day maximum.

### Dosage Methods



Drench gun



Trough



Mixer wagon



Dosing pump

## DAIRY COW TRACE ELEMENT BLEND

(Product code M12)

### Elemental levels

Typical Analysis Mg's per dose @ 5 gms/cow/day

### Element

Copper (sulphate)	101mg
Copper Glycinate	120mg
Zinc (sulphate)	525mg
Zinc Glycinate	151mg
Manganese (sulphate)	124mg
Cobalt (sulphate)	26mg
Iodine (EDDI)	22mg
Selenium (Selenate)	5mg
Boron (Dia Octahydrate)	48mg
Chromium Glycinate	3.5mg
<b>Net Bag Weight</b>	<b>25kg</b>

Mineral levels can be custom blended to herd requirements

# CuZinc



Advantages

BETTER ANIMAL HEALTH

OPTIMISED FOR SUMMER

MINIMISE DEFICIENCIES

MAINTAIN NUTRITION

PREMIUM SEAWEED CONCENTRATE

Achieve complete mineral support over the eczema season by combining CuZinc with your normal zinc dosing. Animals continue to receive the nutrition they need, without negatively interacting with Zinc uptake.

## FEATURES

- **Totally soluble**
- **Copper supplied in glycinate form** – so it is rumen protected and will not negatively interact with zinc uptake
- **High quality mineral chelates** – better delivery of nutrients.
- **Reduce the effects of heat stress and benefit from seaweed concentrate**
- **Easy to use**

## BENEFITS

- Supports a comprehensive facial eczema prevention.
- Remove the issue of negative mineral interactions.
- Maintain balanced nutrition throughout the summer and autumn with a blend optimised for warmer months.

## TECHNICAL INFORMATION

Each bag of product is pre-blended, dried and ground to a consistent particle size.

### Mixing Instructions

These minerals are totally soluble and can be either drenched or dosed through the water system or directly into cattle feed. If this product is to be drenched with magnesium oxide (Causmag, Calmag) it is advisable to let the magnesium oxide solution settle overnight before adding the Soltrace mineral blend. Magnesium sulphate, magnesium chloride, salt, or calcium chloride can be mixed in immediately.

### Daily Dose Rate

The dose is 5gms/dairy cow/day. It can be increased to 5gms twice a day if necessary. Dose rate is not recommended to exceed 10gms per day. Yearlings & dry cows 3gms/day maximum.

### Dosage Methods



Drench gun



Trough



Mixer wagon



Dosing pump

## DAIRY COW TRACE ELEMENT BLEND

(Product code M14)

### Elemental levels

Typical Analysis Mg's per dose @ 5 gms/cow/day

### Element

Copper Glycinate	151mg
Zinc (sulphate)	512mg
Zinc Glycinate	168mg
Manganese (sulphate)	124mg
Cobalt (sulphate)	12mg
Iodine (EDDI)	10mg
Selenium (Selenate)	5mg
Boron (Dia Octahydrate)	75mg
Chromium Glycinate	3.5mg
Seaweed Concentrate	200mg
<b>Net Bag Weight</b>	<b>25kg</b>

Mineral levels can be custom blended to herd requirements

# DCM Plus



Advantages

BETTER ANIMAL HEALTH	GENUINE CHELATES	ORGANIC COPPER CHELATE	MORE COST EFFECTIVE	EASY TO USE
----------------------	------------------	------------------------	---------------------	-------------

When you want something more than just the basics, all year round. DCM Plus has been optimised as a low cost option for supplying a comprehensive range of minerals, enhanced with a copper chelate. If you have copper toxicity or copper deficiency concerns, this product is designed to handle it.

## FEATURES

- **Totally soluble**
- **Comprehensive formulation**
- **High quality organic copper chelate**
- **Easy to use** - superior manufacture produces a product that is dry and free flowing.
- **Pricing** - Higher trace element levels and superior pricing to any other blend currently available.

## BENEFITS

Support animal immunity and health. Avoid mineral deficiencies throughout the year.

The copper chelate provides a higher tolerance to any potential copper toxicity risks of palm kernel feed. It will ensure a good level of copper is maintained at all times even in areas where copper deficiency can be a problem.

## TECHNICAL INFORMATION

Each bag of product is pre-blended, dried and ground to a consistent particle size.

### Mixing Instructions

These minerals are totally soluble and can be either drenched or dosed through the water system or directly into cattle feed. If this product is to be drenched with magnesium oxide (Causmag, Calmag) it is advisable to let the magnesium oxide solution settle overnight before adding the Solutrace mineral blend. Magnesium sulphate, magnesium chloride, salt, or calcium chloride can be mixed in immediately.

### Daily Dose Rate

The usual dose is 5 gms/dairy cow/day, this can be increased to 5 gms twice a day if deemed necessary. It is not recommended that the dose rate exceed 10 gms/day. Yearlings and dry cows 3 gms/day maximum.

### Dosage Methods



Drench gun



Trough



Mixer wagon



Dosing pump

## DAIRY COW TRACE ELEMENT BLEND

### Elemental levels

Typical Analysis Mg's per dose @ 5 gms/cow/day

### Element

Copper Glycinate	150mg
Zinc (sulphate)	1020mg
Manganese	75mg
Cobalt	15mg
Iodine	20mg
Selenium (Selenate)	8mg
Boron (Dia Octahydrate)	50mg
Chromium Glycinate	3.5mg
<b>Net Bag Weight</b>	<b>25kg</b>

\* DCM Plus Low Copper uses organic (chelated) copper at a rate of 50mgs per dose.

Mineral levels can be custom blended to herd requirements



## Advantages

GOOD  
ANIMAL  
HEALTH

ENTRY  
LEVEL  
PRICING

EASY  
USE

When animal health issues are not a major concern DCM provides basic supplement support. This is a simple, but comprehensive blend of inorganic trace elements designed to balance the diet of a dairy herd.

## FEATURES

- **Totally soluble**
- **Comprehensive formulation** – offering all 8 trace elements to enhance cow health and immunity.
- **Pricing** – higher trace element levels optimised for cost.
- **Easy to use** - superior manufacture produces a product that is dry and free flowing.

## BENEFITS

DCM leaves more money in your pocket while providing basic mineral support designed for your farm animals, all year round.

## TECHNICAL INFORMATION

Each bag of product is pre-blended, dried and ground to a consistent particle size.

### Mixing Instructions

These minerals are totally soluble and can be either drenched or dosed through the water system or directly into cattle feed. If this product is to be drenched with magnesium oxide (Causmag, Calmag) it is advisable to let the magnesium oxide solution settle overnight before adding the Solutrace mineral blend. Magnesium sulphate, magnesium chloride, salt, or calcium chloride can be mixed in immediately.

### Daily Dose Rate

The usual dose is 5 gms/dairy cow/day, this can be increased to 5 gms twice a day if deemed necessary. It is not recommended that the dose rate exceed 10 gms/day. Yearlings and dry cows 3 gms/day maximum.

### Dosage Methods



Drench  
gun



Trough



Mixer  
wagon



Dosing  
pump

## DAIRY COW TRACE ELEMENT BLEND

### Elemental levels

Typical Analysis Mg's  
per dose @  
5 gms/cow/day

### Element

Copper Sulphate	250mg
Zinc (sulphate)	612mg
Cobalt	10mg
Iodine	10mg
Selenium (Selenate)	8mg
Boron (Dia Octahydrate)	40mg
Chromium Glycinate	3.5mg
<b>Net Bag Weight</b>	<b>25kg</b>

Mineral levels can be custom blended to herd requirements

# 0800 BALANCE

agvance.co.nz

# Dairy



## Advantages

GOOD  
ANIMAL  
HEALTH

MAXIMIZE  
PRODUCTION

ENTRY  
LEVEL  
COSTS

EASY  
TO  
USE

High producing pasture alone will not supply the balanced nutritional requirements of your dairy cows. Solutrace Dairy has been formulated to take care of the most common trace mineral deficiencies on NZ dairy farms.

## FEATURES

- **Totally soluble**
- **Comprehensive formula** – contains every trace element known to affect the performance and health of an NZ dairy cow
- **Pricing** – optimized for low cost and a basic, but comprehensive formulation
- **Easy to use**

## BENEFITS

Healthy dairy cows maximize your farms production.

Solutrace Dairy is an easy to use, basic and but comprehensive supplement. Designed for NZ Dairy conditions.

## TECHNICAL INFORMATION

Each bag of product is pre-blended, dried and ground to a consistent particle size.

### Mixing Instructions

These minerals are totally soluble and can be either drenched or dosed through the water system or directly into cattle feed. If this product is to be drenched with magnesium oxide (Causmag, Calmag) it is advisable to let the magnesium oxide solution settle overnight before adding the Solutrace mineral blend. Magnesium sulphate, magnesium chloride, salt, or calcium chloride can be mixed in immediately.

### Daily Dose Rate

The dose is 5gms/dairy cow/day. It can be increased to 5gms twice a day if necessary. Dose rate is not recommended to exceed 10gms per day. Yearlings & dry cows 3gms/day maximum.

### Dosage Methods



Drench gun



Trough



Mixer wagon



Dosing pump

## DAIRY COW TRACE ELEMENT BLEND

(Product code M10)

### Elemental levels

Typical Analysis Mg's per dose @ 5 gms/cow/day

### Element

Copper (sulphate)	350mg
Zinc (sulphate)	650mg
Manganese (sulphate)	200mg
Cobalt (sulphate)	20mg
Iodine (EDDI)	10mg
Selenium (Selenate)	8mg
Boron (Dia Octahydrate)	50mg
Chromium Glycinate	3.5mg
<b>Net Bag Weight</b>	<b>25kg</b>

Mineral levels can be custom blended to herd requirements

# 0800 BALANCE

agvance.co.nz

# FE



Advantages

BETTER ANIMAL HEALTH

OPTIMISED FOR SUMMER

CONTAINS ORGANIC CHROMIUM

COMPREHENSIVE FORMULA

EASY TO USE

Soltrace FE is a balanced blend of minerals boosted with seasonally optimum levels of zinc. Choose Soltrace FE for all conditions where a higher level of Zinc is required.

## FEATURES

- **Totally soluble**
- **Comprehensive formula** – supplies 7 essential trace elements normally depleted over the summer period.
- **High quality chromium mineral chelate**
- **Easy to use** – A highly soluble mineral blend that can be dosed directly into water troughs using in trough dispensers or in line dosing systems.

## BENEFITS

Part of your Facial Eczema prevention plan.  
 Avoid mineral deficiency. Maintain balanced nutrition throughout the summer and autumn with a blend optimised for warmer months.

## TECHNICAL INFORMATION

### Dosage

Dose rate 5.8 grams per 100 kgs of bodyweight.  
 Stock should not be dosed continuously at maximum rates for more than 100 days.

### Dosage Methods



Trough



Mixer wagon



Dosing pump

## DAIRY COW TRACE ELEMENT BLEND

Element	Elemental levels based on a dose rate of 30 grams	Form (in the form of)
Zinc	10300mg	Zinc Sulphate Monohydrate*
Copper	150mg	Copper Glycinate
Chromium	5mg	Chromium Glycinate
Cobalt	10mg	Cobalt Sulphate Heptahydrate
Iodine	10mg	Ethylene Diamine Diahydro Iodide
Selenium	5mg	Sodium Selenate
Boron	22mg	DiaSodium Octaborate
<b>Net Bag Weight</b>		<b>20kg</b>

Mineral levels can be custom blended to herd requirements

\*ACVM Registration No: A006924

# 0800 BALANCE

agvance.co.nz



# Rumenox Blends



## SOLUTRACE MINERALS WITH RUMENOX

Boosting your selected comprehensive Solutrace blend with Rumenox provides for amplified production and peak levels of animal health.

### COMBINE TWO WELL-PROVEN PRODUCTS INTO A SINGLE WATER DISPERSIBLE SOLUTION:

#### Solutrace Metabolizer Plus with Rumenox



#### Solutrace DCM Plus with Rumenox



### WHY ADD RUMENOX

**Energy** - Rumenox is a rumen modifier that provides more energy to dairy cows. This energy response is equivalent to feeding an extra 0.5kg to 1.0kg of dry matter. Its mode of action is clearly understood and there is a wealth of research for this technology both internationally and in New Zealand pasture systems.

**Bloat Control** - Rumenox outperforms bloat deterrents, when relying on water medication for controlling bloat.

**Condition** - Rumenox allows your cows to digest their feed more efficiently. New Zealand trials using this technology have shown a 20kg improvement in live weight, equivalent to half a body condition score, from calving through to mating.

**Reduced Ketosis** - significantly reduces the incidence of sub-clinical ketosis in dairy cows by making more energy available and reducing blood ketone levels.

### A HIGH IMPACT FARMING COMBINATION

Rumenox has a proven track record for maximising rumen performance. It achieves bloat control, reduces ketosis and improves condition.

When combined with a premium Solutrace mineral blend of high quality soluble organic minerals, you gain a single, totally soluble product to support sustained animal health and increased production.

Ask Agvance if Metabolizer Plus with Rumenox or DCM Plus with Rumenox is right for your farm.

Alternatively, as with all Solutrace solutions, Agvance will work with your vet to deliver a customised blend, tailored to your farming situation.



Precision Farming

Soluble Minerals

## 0800 BALANCE

[agvance.co.nz](http://agvance.co.nz)

For optimum results Rumenox should be introduced pre-calving, or if not practical, administered into the stock water as soon as the herd returns to the milking platform in early spring.





## Speciality Products



Metabolizer Plus for Goats

Ascocool

Liverade

Calf AminoBoost

Canine AminoBoost

# Mineral Supplementation for Goats

Goats are very high performing dairy animals - even more efficient at converting dry matter to milk volume and solids than high producing dairy cows. Goats also have very specific mineral requirements. They require relatively higher levels of most trace elements and are typically more susceptible to mineral deficiencies.

## CUSTOM SOLUTIONS

With differing diets, seasonal demands and known herd deficiencies a customised mineral solution will deliver the best on-farm results. Agvance Customizer enables your vet or qualified nutritionist to create a tailored blend for your goats. As your herd needs change, the Customizer program allows easy, quick and effective updates to your formulation.



Precision Farming

Soluble Minerals

Feed Premixes



## ACCESS THE RIGHT NUTRITION AT THE RIGHT TIME

### - TRANSITION FEED PREMIX

These are specialised negative DCAD blends that can be mixed with silages or meals and fed during the pre-kidding period. These blends are built in such a way as to deliver the ideal DCAD level, based on the specific diet at this time. They are designed to fire up the parathyroid producing hormones that increase absorption of calcium, while at the same time preparing the rumen for the rigors of early lactation.

Note, there is some evidence that negative DCAD salts should not be fed to does coming into their first lactation.

Only feed negative DCAD salts pre-lactation, not during lactation.

### - LACTATION FEED PREMIX

Lactation premixes combine all the required macro and trace elements required by your lactating does in one single easy to use formulation. These blends combine salts such as magnesium oxide, salt, lime flour, gypsum, trace minerals and even toxin binders if required. Again, these blends take in diet, seasonal demand and known deficiencies, in order to create the optimal and most cost effective blend for your goats.

These blends can then be changed and updated as the season progresses, so that regardless of the ratio of feed, or production level at the time, your goats always receive optimum mineral supplementation.

# Metabolizer Plus for Goats



Advantages

SUPERIOR ANIMAL HEALTH	PREMIUM CHELATES	HIGH IN ORGANIC ZINC	HIGH IN ORGANIC COPPER	OPTIMAL IMMUNITY
------------------------	------------------	----------------------	------------------------	------------------

Goats are typically more susceptible to mineral deficiencies than dairy cattle and require higher levels of most trace elements. Metabolizer Plus for Goats provides comprehensive support for goat nutrition and wellbeing all year round.

## FEATURES

A complete blend of highly concentrated minerals including vitamin D. High quality mineral chelates deliver maximum uptake of mineral nutritional value, while eliminating the risk of mineral antagonism within the rumen.

- **Totally soluble**
- **High levels of minerals in organic form**
- **Superior mineral availability due to highly complexed Zinc Glycinate and Copper Glycinate**
- **Easy to use**

## BENEFITS

Avoid mineral deficiency.

Support optimal immunity throughout the year. Minimise exposure to animal health issues on the farm.

High quality Zinc and Copper Chelates support healthy connective tissue, skin, reproductive performance and overall bone health. Supports long term hoof health.

## TECHNICAL INFORMATION

Each bag of product is pre-blended, dried and ground to a consistent particle size.

### Mixing Instructions

These minerals are totally soluble and can be either drenched or dosed through the water system or directly into goat feed. If this product is to be drenched with magnesium oxide (Causmag, Calmag) it is advisable to let the magnesium oxide solution settle overnight before adding the Solutrace mineral blend. Magnesium Sulphate, magnesium chloride, salt, or calcium chloride can be mixed in immediately.

### Daily Dose Rate

Recommended dose is 1gms/dairy goat/day.

### Dosage Methods



Drench gun



Trough



Mixer wagon



Dosing pump

## DAIRY GOAT TRACE ELEMENT BLEND

(Product code M16)

### Elemental levels

Typical Analysis Mg's per dose @ 1.0gm/goat/day

### Element

Copper Glycinate	50mg
Zinc Glycinate	100mg
Manganese (sulphate)	50mg
Cobalt (sulphate)	5mg
Selenium (Selenate)	1.0mg
Boron (Dia Octahydrate)	20mg
Chromium Glycinate	2mcg
VIT D3	1500IU
<b>Net Bag Weight</b>	<b>20kg</b>

Mineral levels can be custom blended to herd requirements

## Advantages

TOTALLY  
SOLUBLE  
IN WATER

NATURAL  
ANIMAL  
TONIC

IMPROVE  
IMMUNITY

REDUCE  
HEAT  
STRESS

EASY  
TO  
USE

## When the heat is on, choose a natural animal tonic for your animals.

Ascocool is a highly concentrated extract of the finest quality seaweed available – pure Atlantic brown (*Ascophyllum Nodosum*). It is grown slowly in the nutrient rich frigid waters of the North Atlantic, ensuring an end product power packed with high levels of nutrient.

### • POWER PACKED WITH NUTRIENTS

Contains over 60 macro and trace minerals, 12 vitamins, 21 amino acids and enzymes. Heavily loaded with alginates as well as amino acids. Alginates are powerful natural mineral chelators that when incorporated into the diet can increase availability.

### • EASY TO USE

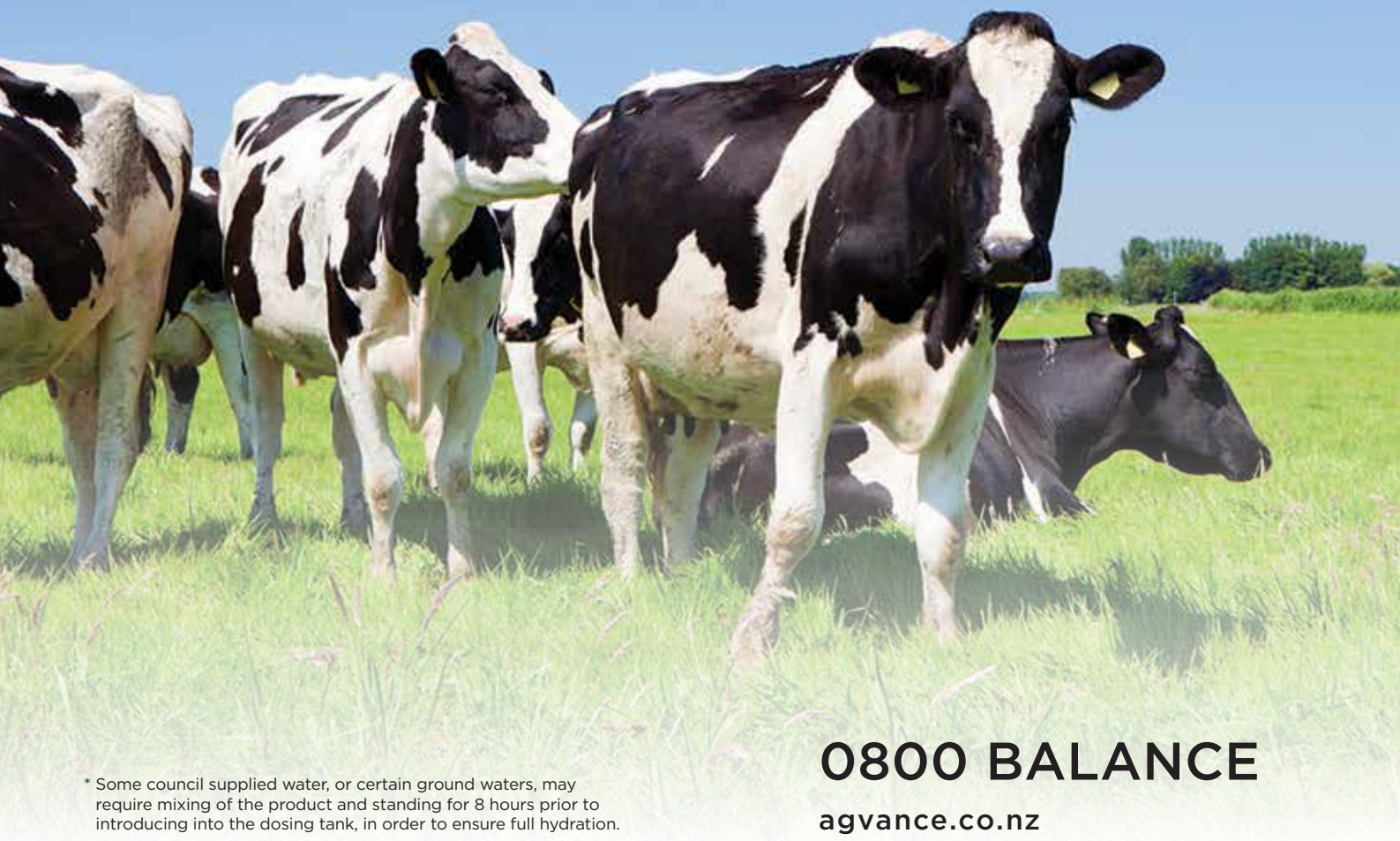
The product comes in a fine, free flowing highly concentrated crystalline form that can be blended directly into feeds, or when added to water can be dosed into the drinking water, it is instantly soluble.\*

### • COST EFFECTIVE

When fed at normal daily supplementation rates, Ascocool costs less than a cent per dose. When fed at peak dose rates, 2 cents per dose. This is a fraction of the cost of other similar products on the New Zealand market.

### • HIGH QUALITY

Using a special vacuum evaporation system, the product is gradually dried down at a low temperature. This process guarantees that all the characteristics that make seaweed such a unique animal health tonic are effectively locked into the end product.



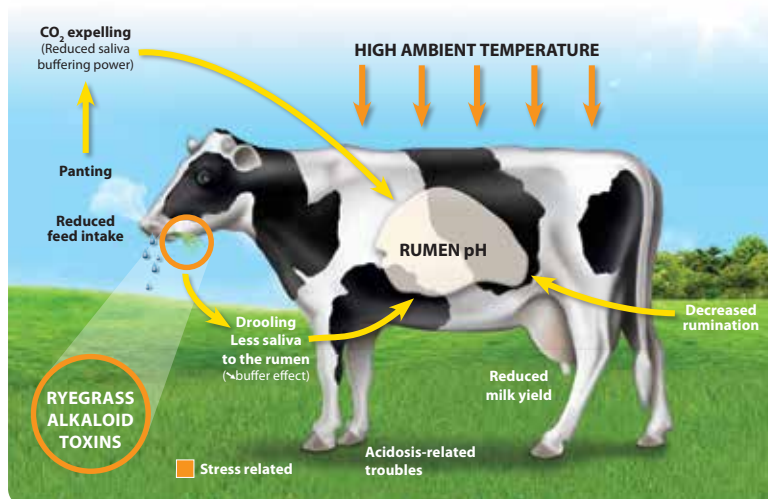
## 0800 BALANCE

[agvance.co.nz](http://agvance.co.nz)

\* Some council supplied water, or certain ground waters, may require mixing of the product and standing for 8 hours prior to introducing into the dosing tank, in order to ensure full hydration.

## BENEFITS ON THE FARM

Ascocool seaweed tonic provides a natural supplementation option for farmers, especially when the effects of summer heat and acidosis are a concern.



More peer reviewed trial work has been carried out on this genus of seaweed (*Ascophyllum Nodosum*) than any other in the world.

Trial work with dairy cows has shown that this particular seaweed genus can:

- Supply a range of unique carbohydrates called poly and mono-saccharides. These substances when introduced into the digestive system have the potential to act as powerful prebiotics and create a better environment for more efficient bacterial breakdown of feed.<sup>1</sup>
- Binds certain naturally occurring toxins that build up in grasses under environmental stress, causing heat stress and problems in the central nervous system. Toxins are also formed when moulds are present in stored feed. This feed when fed to cattle can reduce production or cause other more serious health effects.<sup>2</sup>
- Shown to increase immunity.

## TECHNICAL INFORMATION

Ascocool is supplied in a dry, soluble, crystalline form. 25kg net bag weight.

### Dose Rate

Calves	0.25 - 0.6 Gram/Dose
Yearlings	0.4 - 0.8 Gram/Dose
Dairy Cattle	0.8 - 1.0 Gram/Dose
Goats	0.1 - 0.2 Gram/Dose

<sup>1</sup> (Prebiotics from Marine Macro Algae for Human and Animal Health Applications - L. O'Sullivan et al.)

<sup>2</sup> (Effect of *Ascophyllum Nodosum* on heat stress in dairy cows. - L.B. Pompeu et al)

## ANALYSIS OF SEAWEED EXTRACT

### Element

Total Nitrogen (N)	1.0 - 2.0%
Calcium (Ca)	0.1 - 0.2%
Available Phosphoric Acid (P2O5)	1.0 - 2.0%
Sodium (Na)	3.0 - 5.0%
Soluble Potash (K2O)	16.0 - 20.0%
Boron (B)	75 - 150ppm
Sulphur (S)	1.0 - 2.0%
Iron (Fe)	75 - 250ppm
Magnesium (Mg)	0.2 - 0.5%
Manganese (Mn)	8 - 12ppm
Copper (Cu)	1 - 10ppm
Zinc (Zn)	25 - 75ppm

Maximum Moisture	6.5%
Organic Matter	45 - 55%
Ash (minerals)	45 - 55%
Carbohydrates	Alginic Acid, Mannitol, Laminarin

### Amino acids (average g of amino acid / 100g of protein)

Alanine	3.81
Arginine	0.22
Aspartic Acid	5.44
Cystine	trace
Glutamic Acid	7.69
Glycine	3.16
Histidine	0.42
Isoleucine	1.94
Leucine	4.84
Lysine	1.33
Methionine	1.39
Phenylalanine	2.82
Proline	4.42
Serine	0.14
Threonine	1.27
Trysine	1.80
Valine	3.46

## **LIVER STRESS AND LIVER DISEASE IN RUMINANTS**

There are many daily stresses on a cow's liver. Such stresses often originate naturally in a cow's diet. They can come from the grass, conserved feeds such as silage, and even high energy grain (meal) feeds. Many of these feeds will contain toxins such as, ergot toxins, mycotoxins, aflatoxins, and of course sporisdesmin toxin (facial eczema toxin).

All of these toxins can place a heavy strain on the liver even when good treatment systems are in place, in extreme cases the end result can be total liver failure.

**Liverade is a combination of key minerals, vitamins, amino acids, and herbs, all designed to keep the liver strong and aid in cell regeneration.**







## DESIGNED TO MAINTAIN LIVER HEALTH AND PERFORMANCE

Advantages

VITAMIN D SYNTHESIS FOR HEALTHY BONES

BLOOD DETOXIFICATION

STRONG IMMUNITY

### WHY USE LIVERADE

Liverade is a combination of organic (chelated) minerals, amino acids, vitamins and herbs, designed to strengthen and aid in the rebuilding of body cells, particularly in the liver.

#### LIVERADE SUPPORTS

- Vitamin D synthesis for Healthy Bones
- Blood Detoxification
- Strong Immunity

### TECHNICAL INFORMATION

Supplied as a non soluble suspend-able powder formulation to be mixed with water and drenched.

1kg net pot weight.

#### Dosing Instructions

Mix with water to make a suspension and then drench once daily for three days (contains a natural suspension agent).

**Dose rate:** (10 grams per 50 kgs of live-weight) x 3 daily doses

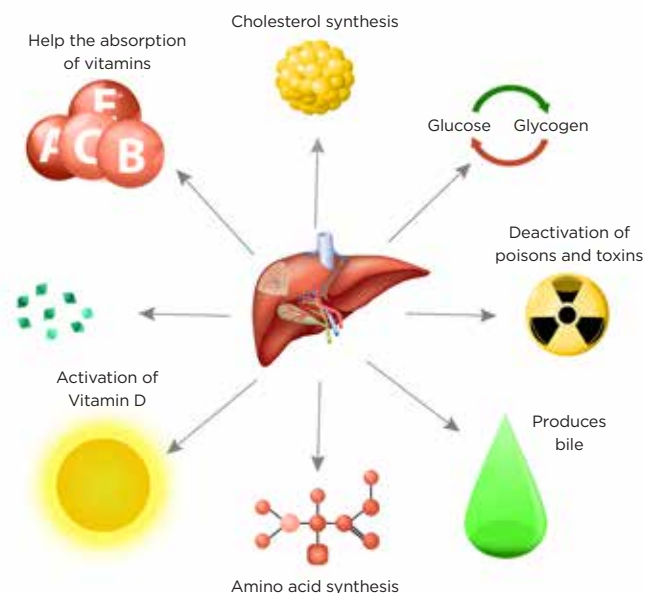
Adult Dairy Cattle	3 daily doses	110 grams per dose
Sheep Adult Ewe	3 daily doses	16 grams per dose

Do not dose above recommended levels, and do not repeat doses within 7 days of an earlier 3 dose sequence.

# 0800 BALANCE

agvance.co.nz

### PROCESSES INVOLVING THE LIVER



### ROBUST NATURE OF THE LIVER

The liver is the largest organ in the body, and as such performs a large number of vital functions. The liver is also the only organ that has the ability to rapidly rebuild damaged cells. Providing the affected animal is given good nutritional support, the liver has an amazing capacity to rebuild damaged tissue, which can happen rapidly and very efficiently.

A healthy liver will regenerate all cells over a 200 day period, a liver under stress can regenerate cells at a much faster rate.

# Calf AminoBoost



Advantages

STRONGER  
CALVES

COST  
EFFECTIVE

IMPROVE  
IMMUNITY

EASY  
TO  
USE

An optimum blend of soluble minerals, vitamins & amino acids ensuring your calf gets the best start.

## FEATURES

- A complete combination of key amino acids, minerals, and vitamins designed to keep the calf **healthy and in peak condition**.
- Scientifically formulated using the **latest research** available
- Works well in association with **quality calf meals and/or milk replacers**.
- **Fully water soluble** making it easy to dose through the milk.
- A **cost effective** way of helping to boost immune response ensuring optimal growth and development for around \$11.55/calf for an 8 week period.

## TECHNICAL INFORMATION

### Dose Instructions

4gms per calf per day

Blended with raw milk or milk replacer

Packaged into 10kg bucket

### INGREDIENTS

Copper Glycinate	Magnesium Aspartate	Methionine
Zinc Glycinate	Vitamins A, B1, B12, C,	Fulvic Acid
Iodine	D3, E	Iron Glycinate
Manganese Glycinate	BioBn	Seaweed
Selenium Yeast	Lysine	Monensin

## BENEFITS

Calf AminoBoost is a specially formulated, easy to use nutritional blend that supports:

- Stronger calves
- Quicker rumen development
- Higher weaning weights
- Increased disease resistance



**0800 BALANCE**

[agvance.co.nz](http://agvance.co.nz)

# Canine AminoBoost



## Advantages

STRONG  
BONES

HEALTHY  
JOINTS

BETTER  
OVERALL  
HEALTH

EASY  
TO  
USE

Canine AminoBoost is a nutritional supplement designed to balance the diet of any dog receiving a modern western dog diet. This includes the majority of dogs that are eating pre-formulated dog food, regardless of its perceived quality.

## FEATURES

- **Designed to meet the nutritional requirements of your working dog**
- **Resolves dietary deficiencies** - modern commercial foods prioritise product stability, convenience of form and ingredient cost. This typically results in more dry, grain-based dog feeds that do not deliver the nutrients a healthy active dog requires.
- **Comprehensive formula** - minerals, amino acids and vitamins in combination directly target canine needs.
- **Key minerals in high quality chelated form - maximises absorption of nutrients**

## BENEFITS

The Canine Amino Boost blend is designed to maintain strong bones, healthy joints and organs, and optimum energy utilisation, while also protecting against the myriad of diseases common to our modern pets.

## TECHNICAL INFORMATION

Bag weight: Available in 250g and 500g packs

### Mixing Instructions

Mix powder into food or mix with water and blend into food.

Product has bacon flavoring which is very attractive to dogs.

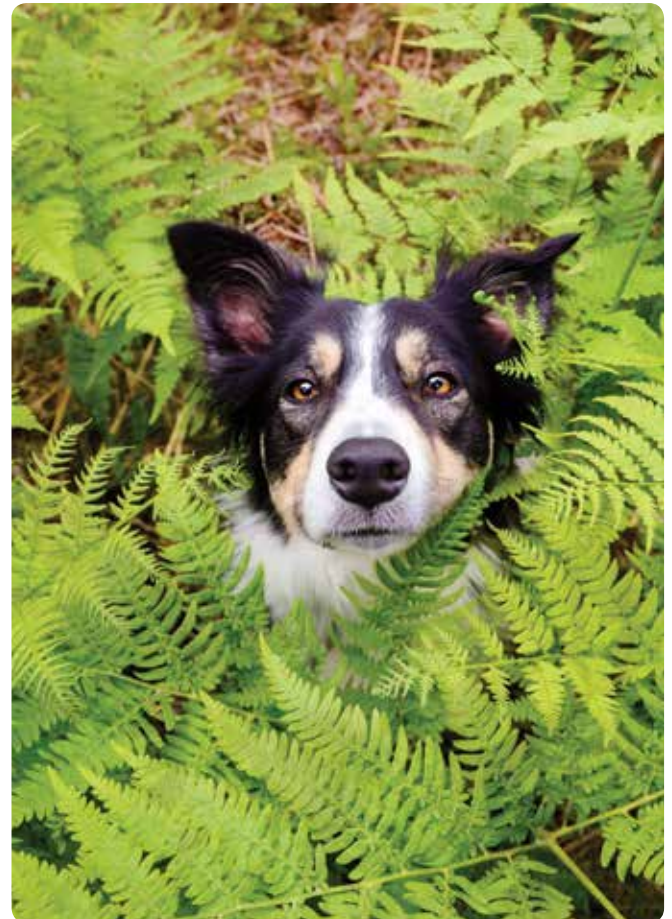
### Daily Dose Rate

Heavy Dog (>40 Kgs) 15 Grams - 1 Scoop.

Large Dog (20 - 40 Kgs) 11 Grams - 3/4 Scoop.

Medium Dog (10 - 20 Kgs) 7 Grams - 1/2 Scoop.

Small Dog (3 - 9 Kgs) 4 Grams - 1/4 Scoop.













Contact us today for a free no obligation consultation.  
Email us at [enquiries@agvance.co.nz](mailto:enquiries@agvance.co.nz) or call:

0800 BALANCE

[agvance.co.nz](http://agvance.co.nz)