

CALSEA Powder

ADVANCE

RUMINANTS

Natural pH management

MADE IN
FRANCE


NUWEN
Source of performance

Contact Agvance for
product information
and purchases

0800 BALANCE
agvance.co.nz

 **AGVANCE**
Success. Together.

ACIDOSIS : A MAJOR CONCERN

Research for high performance in cattle production requires a specific diet with high energy intake (corn, silage, wheat, barley) and a low fiber content. This diet causes an acid accumulation in the rumen leading to adverse effects on animal health, zootechnical and economical performances.

CONSEQUENCES OF ACIDOSIS ON A DAIRY COW

Acidosis is one of the most important nutritional diseases for dairy cows. Consequences affect both animal health and profits.

Decrease of ingested dry matter
Dehydration

Lower digestibility of the ration
Gastro-intestinal lesions
Liver abscess

Diarrheas

Laminitis

LOWER MILK YIELD : 1KG DECREASE / COW / DAY

DECREASE OF MILK FAT CONTENT (15% DECREASE)

DALSEA *Powder*
ADVANCE

Contact Agvance for
product information
and purchases

0800 BALANCE
agvance.co.nz

 **AGVANCE**
Success. Together.

CALSEAPOWDER ADVANCE A SOURCE OF MARINE MINERALS AND AN EFFECTIVE PH MANAGER

HIGHLY BIOAVAILABLE MINERALS AND TRACE MARINE

CALSEAPOWDER Advance, a fossilized red algae, is composed of more than 30 trace marine minerals. There is high **calcium and magnesium bioavailability** as well as many minerals and **trace elements with nutritional benefits** (iron, copper, iodine, sodium).

33%
OF MARINE
CALCIUM

EFFECTIVE REGULATION OF RUMEN pH **IN THE SHORT AND LONG TERM**

CALSEAPOWDER Advance contains a natural combination of two marine antacids: calcium carbonate and magnesium. Calcium carbonate is present in different forms to neutralize rumen acids through the presence of:

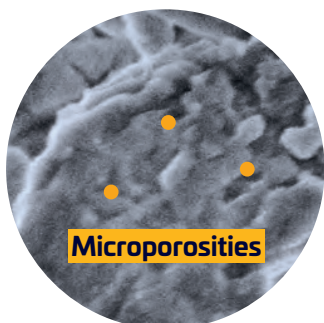
- **aragonite** which acts quickly.
- **calcite** which has a longer lasting effect.

**COMPLIMENTARY
SOLUBILITY**

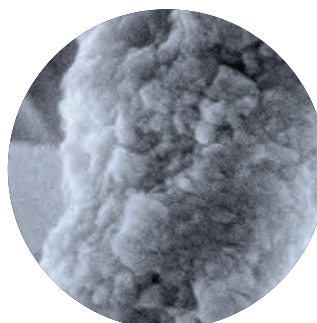
UNIQUE **MICROPOROUS STRUCTURE**

CALSEAPOWDER Advance has a **unique microporous structure** which increases its contact surface and thus ensures better mineral bioavailability. It guarantees a **greater effect on ruminal pH**.

The **honeycomb structure**, specific to CALSEAPOWDER Advance, can be considered as a favorable environment for ruminal **microflora development**, allowing better digestibility and better productivity (milk and meat).



CALSEAPOWDER ADVANCE



CALCIUM CARBONATE

Scanning electron microscopy (500 nm) showing the porosity of CALSEAPOWDER Advance (left) vs terrestrial calcium carbonate (right) carried out jointly with the Polytechnic School of Paris France.

A COMPLETE RANGE **ADAPTED TO YOUR NEEDS**

Advantages

- Maintains pH at an optimal level
- Balances ruminal flora
- Improves digestibility
- Frees up space in the formula

Productivity gains

- Increases milk yield (up to +15%)
- Improves milk quality: fat yield (up to +25%)
- Improves growth
- Regulates heat stress

TWO GRANULOMETRIES : POWDER AND MICRO-GRANULATED

CALSEAPOWDER ADVANCE AND **CALSEAPOWDER ADVANCE G**



**CALSEAPOWDER
ADVANCE**



**CALSEAPOWDER
ADVANCE G**

- Strong palatability: smell and flavor
- Strict granulometry between 0.5-1 mm
- Limit dust
- Flat storage eased
- Drastic reduction of clogging